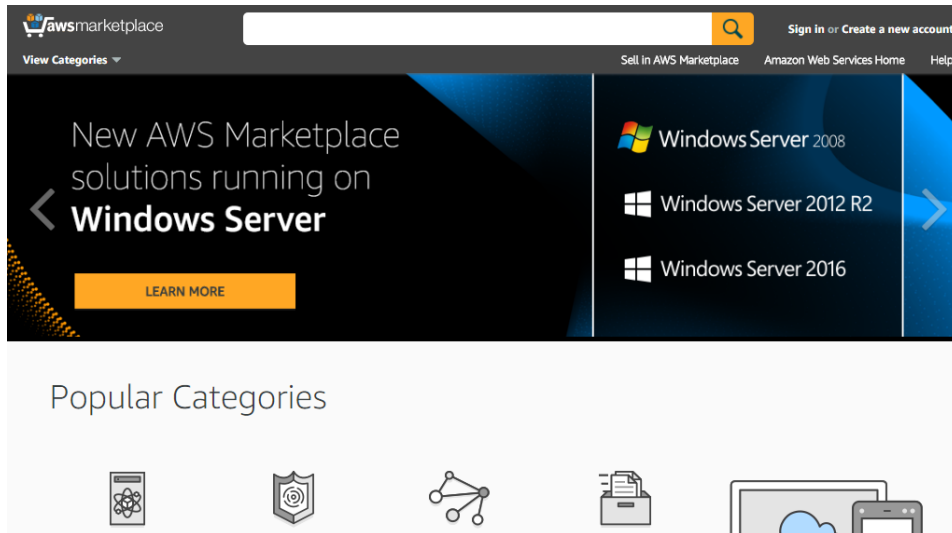


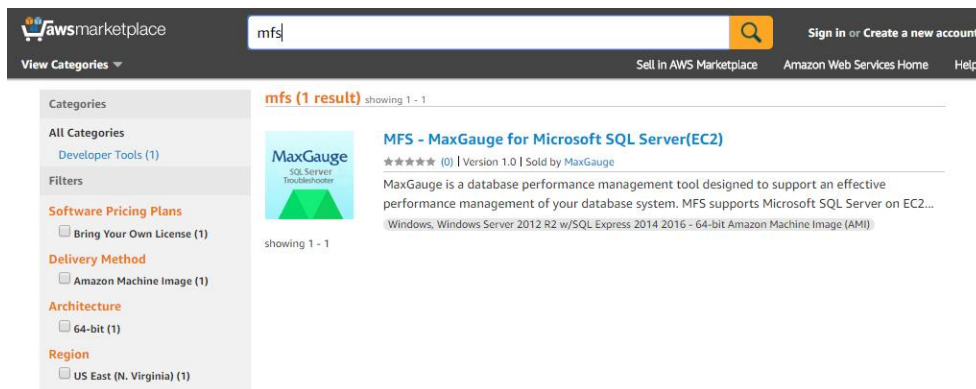
■ MFS on AWS installation guide

(1) Go to amazon Marketplace homepage.

<https://aws.amazon.com/marketplace>

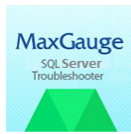


(2) Search 'MFS' and choose 'MFS - MaxGauge for Microsoft SQL Server(EC2)'



### (3) Choose 'Delivery Methods'

- Choose 'Region' and click '**Continue**'



#### MFS - MaxGauge for Microsoft SQL Server(EC2)

on Windows Server 2012 R2 w/SQL Express 2014 2016  
Sold by: MaxGauge | [See product video](#)

MaxGauge is a database performance management tool designed to support an effective performance management of your database system. MFS supports Microsoft SQL Server on EC2. MFS collects Database metrics(connections, session details etc) and system metrics(CPU, disk free space etc).

<b>Customer Rating</b>	★★★★★ (0 Customer Reviews)
<b>Latest Version</b>	1.0
<b>Operating System</b>	Windows, Windows Server 2012 R2 w/SQL Express 2014 2016
<b>Delivery Method</b>	64-bit Amazon Machine Image (AMI) ( <a href="#">Read more</a> )
<b>Support</b>	<a href="#">See details below</a>
<b>AWS Services Required</b>	Amazon EC2, Amazon EBS
<b>Highlights</b>	<ul style="list-style-type: none"><li>▪ "MaxGauge for SQL Server" provides performance monitoring and analysis report for Microsoft SQL Server(EC2) on AWS.</li><li>▪ Installing agent is simple. First, download from S3(<a href="https://s3.ap-northeast-2.amazonaws.com/exem.mfs/agent_mfs.zip">https://s3.ap-northeast-2.amazonaws.com/exem.mfs/agent_mfs.zip</a>) to SQL Server. Second you can install agent by 1 click</li><li>▪ Support HTML5: Users can monitor conveniently using a Chrome web-browser.</li></ul>

**Continue** You will have an opportunity to review your order before launching or being charged.

#### Pricing Details

**For Region**  
Asia Pacific (Seoul)

**Bring Your Own License (BYOL)**  
Available for customers with current licenses purchased via other channels.

**Hourly Fees (includes Windows Server 2012 R2 w/SQL Express 2014 2016)**  
Total hourly fees will vary by instance type and EC2 region.

EC2 Instance Type	Software	EC2	Total
t2.medium	\$0.00/hr	\$0.082/hr	\$0.082/hr
t2.large	\$0.00/hr	\$0.156/hr	\$0.156/hr
m4.large	\$0.00/hr	\$0.224/hr	\$0.224/hr
m4.xlarge	\$0.00/hr	\$0.449/hr	\$0.449/hr
m4.2xlarge	\$0.00/hr	\$0.896/hr	\$0.896/hr
m4.4xlarge	\$0.00/hr	\$1.793/hr	\$1.793/hr

### (4) Choose **1-Click Launch**

- Version: Latest version
- Region: Asia Pacific (Seoul)
- EC2 Instance Type : t2.medium (which fits to monitor 1~2 SQL Server Instance)
- VPC Settings : Choose suitable VPC
- Security Group : Choose suitable Security Group
- Key Pair : Choose the Key that will be used

Click '**Accept Software Terms & Launch with 1-Click**'

## Launch on EC2:

# MFS - MaxGauge for Microsoft SQL Server(EC2) on Windows Server 2012 R2 w/SQL Express 2014 2016

**1-Click Launch**  
Review, modify and launch

**Manual Launch**  
With EC2 Console, API or CLI

**Click "Accept Software Terms & Launch with 1-Click" to launch this software with the settings below**

Once you accept the terms, you will have access to launch any version of this software in any supported region. For future launches, you can return to this page or launch directly from the EC2 console, APIs or CLI.

**Version**  
1.0, released 12/09/2016

**Region**  
Asia Pacific (Seoul)

**EC2 Instance Type**  
t2.medium

**VPC Settings**  
Will launch into: subnet-e1ac16ac (100.100.0.0/24)

**Security Group**  
default

**Key Pair**  
ec2\_seoul

**Price for your Selections:**

**Bring Your Own License (BYOL)**  
Available for customers with current licenses purchased via other channels.

**\$0.08 / hour**  
\$0.08 t2.medium EC2 Instance usage fees +  
\$0.00 hourly software fee hourly software fee

**\$0.114 per GB-month of provisioned storage**  
EBS General Purpose (SSD) volumes

**Launch with 1-click**

You will be subscribed to this software and agree that your use of this software is subject to the pricing terms and the seller's [End User License Agreement \(EULA\)](#) and your use of AWS services is subject to the [AWS Customer Agreement](#).

**Cost Estimator**

**Bring Your Own License (BYOL)**  
Available for customers with current licenses purchased via other channels.

plus

**\$59.04 / month**  
EC2 Instance usage fees  
Assumes 24 hour use over 30 days

**AWS Infrastructure Charges**

**\$59.04 / month**  
Cost varies for storage fees  
\$59.04 hourly EC2 instance fees for t2.medium  
Varied EBS Storage and data transfer fees [↗](#)

(5) When you see the page below, click 'SIGN IN TO AWS CONSOLE'.

✓ Thank you for launching MFS - MaxGauge for Microsoft SQL Server(EC2)

**An instance of this software is now deploying on EC2.**  
Software and AWS hourly usage fees apply when the instance is running and will appear on your monthly bill.

**Next Steps:**

- The software will be ready in a few minutes.

**Software Installation Details**

Product	MFS - MaxGauge for Microsoft SQL Server(EC2)
Version	1.0
Region	ap-northeast-2
EC2 Instance Type	t2.medium
VPC	vpc-1f8dfc76
Subnet	subnet-e1ac16ac
Security Group	default
Key Pair	ec2_seoul

[Return to Product Page](#)

**Related Links**

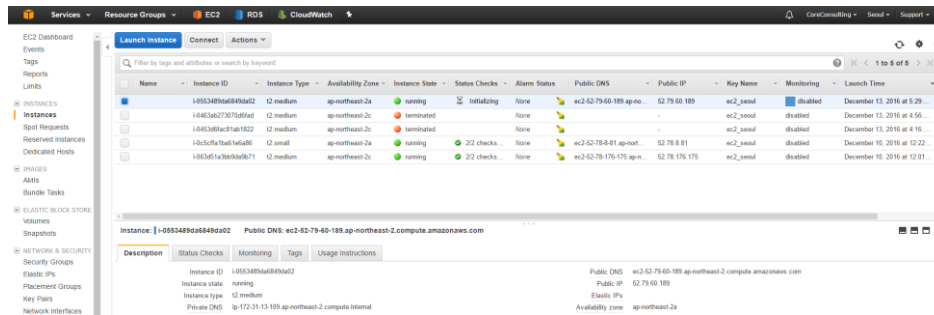
- [AWS Management Console](#)
- [Your Software](#)
- [Continue shopping on AWS Marketplace](#)

**Service Catalog**

Click [here](#) for instructions to deploy Marketplace products in [AWS Service Catalog](#).

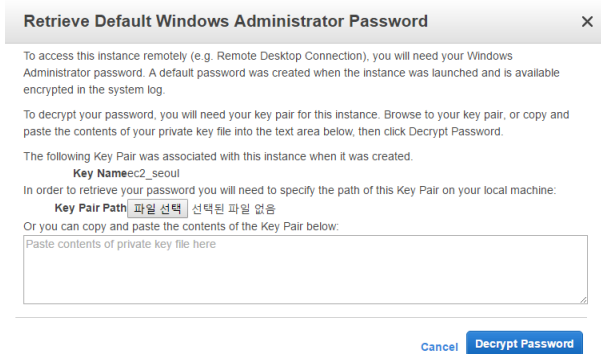
[AWS Marketplace on Twitter](#) [AWS Marketplace Blog](#) [RSS Feed](#) [SIGN IN TO AWS CONSOLE](#)

## (6) Check EC2 Instances information



## (7) Check Windows password

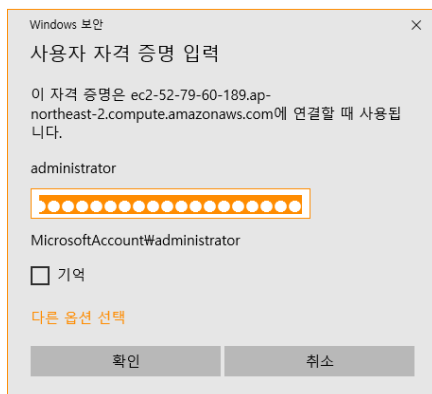
### - Actions → Get Windows Password



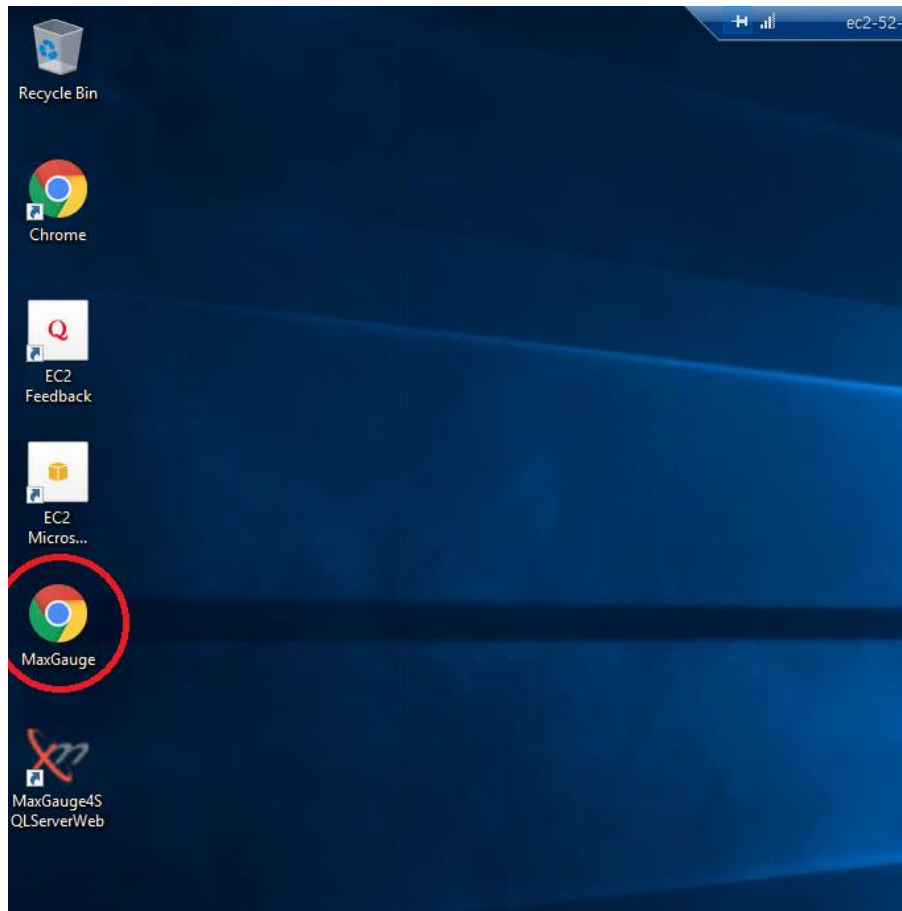
- Choose the file(choose authentication key) → Decrypt Password

- Check Public DNS, User name, Password

## (8) Connect Windows remote desktop using the information that you have already checked above.

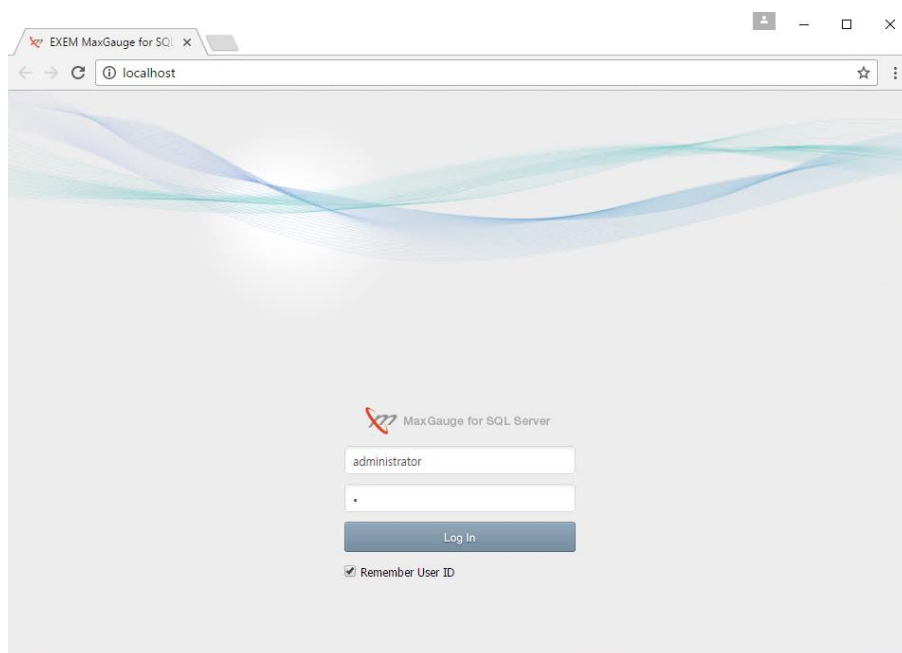


(9) Run Chrome(MaxGauge)

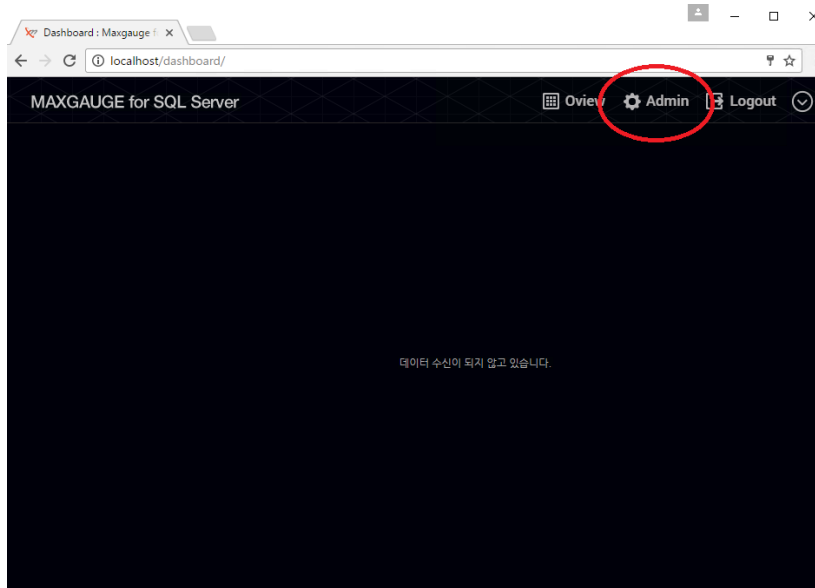


(10) Access MFS

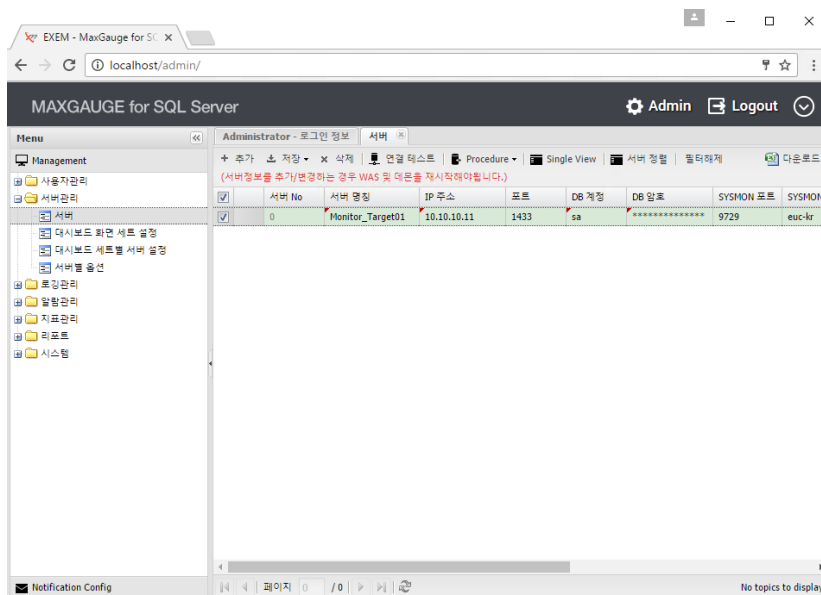
- ID : administrator, Password : 1



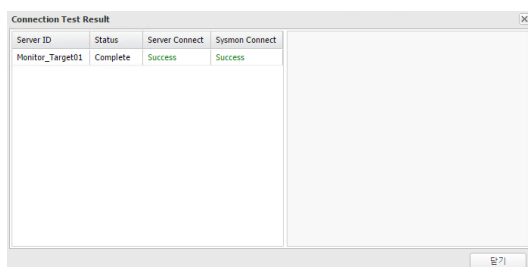
(11) Register server that needs to be monitored by MFS



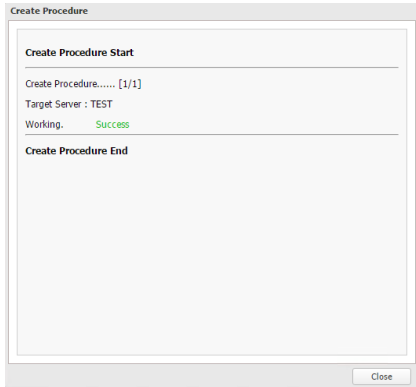
- Admin → Server → Add new → Add server information



- Click 'Connection Test'



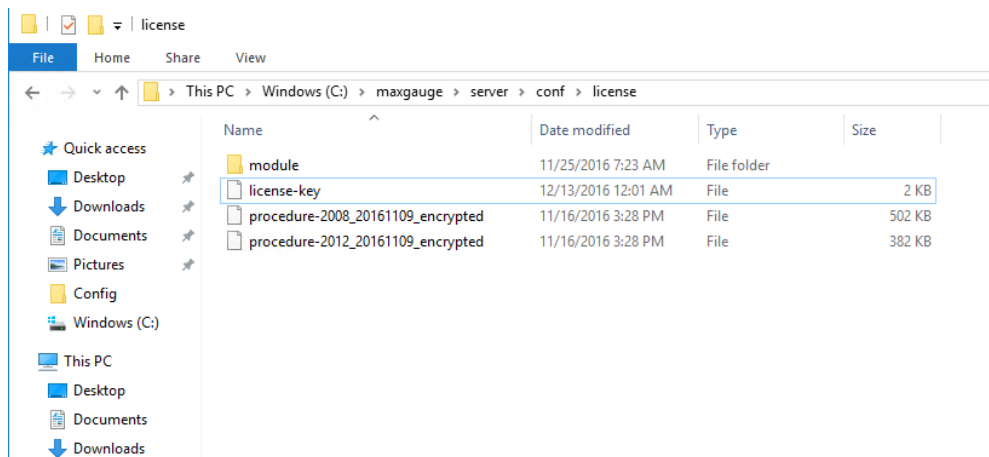
- Click 'Procedure' → Procedure create



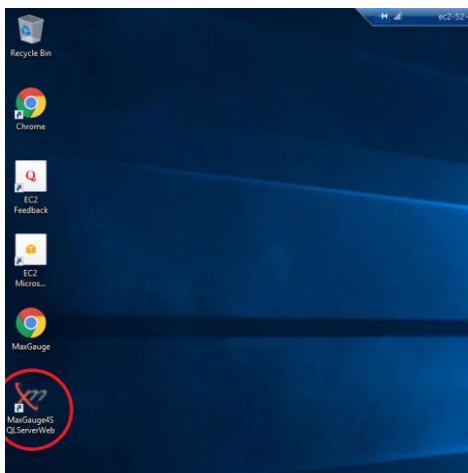
- Click '**Close**' → save procedure

## (12) Register license Key

- Copy the license key to the right route(C:\maxgauge\server\conf\license).

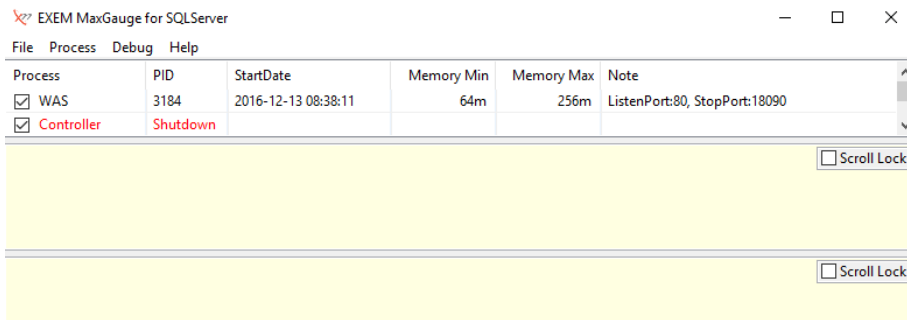


## (13) Run 'MFS Management Console'



(14) Run 'Logging Controller'

- Click '**Process**' → Controller Start



(15) Run Chrome(MaxGauge)

